

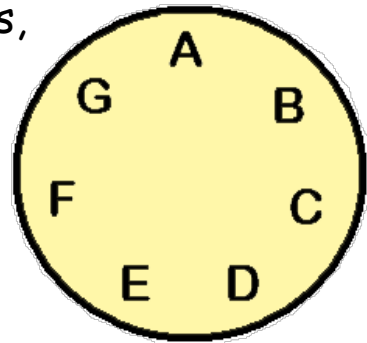
Reading Music



To become a competent music reader one needs only to practice reading music notes on a regular basis.

The Musical Alphabet

The musical alphabet contains only 7 letters, A through G. The important thing to remember is, the letters are like a wheel, after G is A, and before A is G.



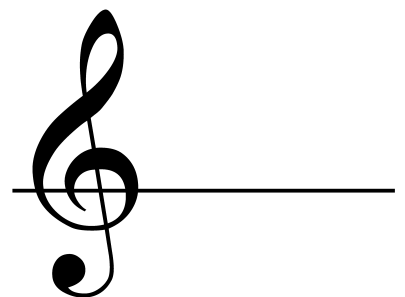
The G Clef



The G Clef (also known as the treble clef) is the key to unlocking the letter names on the lines and spaces of music.

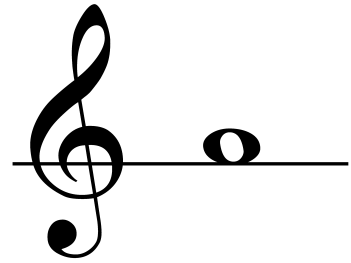
Identifying the Notes

The first note to identify is "G". This note can be found on the line that goes through the circle on the G Clef. All notes placed on this line are called "G".



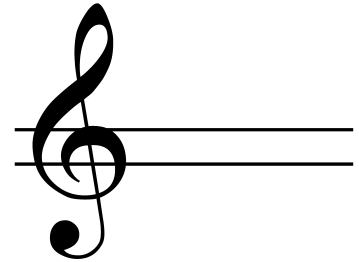
Reading Music

The note found above the G line is "A".



The Two Line Staff

To have another note above the "A" note we must add a line. This line will be called "B" and placed above the "G" line.



Line and Space Notes

The line through the G Clef Circle is "G" and the line above is "B". There is a space between the two lines called "A". The notes "G" and "B" are line notes. The note "A" is a space note.

The Notes B-A-G

The 3 notes found on the two line staff are "B", "A" and "G".

